



"HARD TOP" TONNEAU COVER

CHEV MODELS 1930-36, 1937-39, 1940-46, 1947-53, 1954-87

Thank you for purchasing this "Pro's Pick" product. This tonneau cover has been constructed with the highest quality materials available and should give you many years of trouble-free service. This product has been designed to be installed without damaging the existing paint on your bed.

Please read the instructions over several times before starting the installation.

KIT CONTENTS

Open the package and make sure that all the correct contents have been included.

CONTENTS	1930-36	1937-39	1940-46	1947-53	1954-87
Rigid aluminum cover and sub frame assembly	24 230 101	24 237 101	24 240 101	24 247 101	24 254 101
Pair of hinges	24 230 099	24 230 099	24 230 099	24 230 099	24 254 099
Pair of rain gutters	24 100 098	24 100 098	24 100 098	24 100 098	24 100 098
Aluminum front drip tray	24 230 098	24 230 098	24 240 098	24 247 098	24 247 098
Steel cover for front bed panel	24 230 097	24 230 097	24 240 097	24 247 097	24 247 097
Weatherstrip kit	24 100 096	24 100 096	24 100 096	24 100 096	24 100 096
Fastener kit	24 100 101-H	24 100 101-H	24 100 101-H	24 100 101-H	24 100 101-H
Adhesive kit	24 100 102-A	24 100 102-A	24 100 102-A	24 100 102-A	24 100 102-A
Actuator bracket kit	24 100 104-H	24 100 104-H	24 100 104-H	24 100 104-H	24 100 103-H
Pair of Lec Trak actuators	01 153 220	01 153 220	01 153 220	01 153 220	01 153 220
Power window switch	01 170 101	01 170 101	01 170 101	01 170 101	01 170 101
Small piece of .102 aluminum - to be used as a gauge					

TOOLS REQUIRED

1/8" drill bit
5/32" drill bit
1/4" drill bit
25/64" drill bit
1/2" drill bit
hand drill

hammer
masking tape
hack saw
t 20 Torx screwdriver
fine tip magic marker
clear sealant

center punch
a helper

INSTALLATION

APPROXIMATE TIME REQUIRED 3-4 HOURS

1 Very carefully measure the width between the bedsides in the area of the front stake pockets and the rear stake pockets. It should be 46" for 1930-39 models (48 1/2" for 1940-46) (50" for 1947-87). Now measure the overall length of the bedside, it should be 74 3/8" for 1930-36 models (79 3/4" for 1937-53) (80 1/8" for 1954-87). Then measure diagonally to ensure that the bed is square. If the bed is out of square more than 3/16", loosen the mounting bolts, square up the bed and re-tighten the mounting bolts. **Please ensure that you have the correct measurements for the year of your vehicle.**

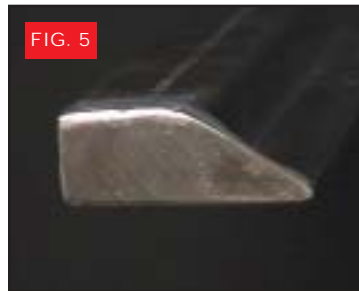
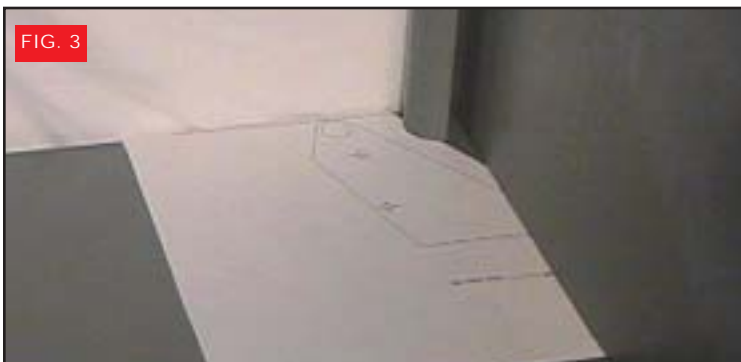
2 Apply masking tape to the bedsides from the inside of the tailgate 3" forward and from the top of the bedside 3" downward (fig. 1). Apply masking tape to both bedsides covering a 6" square area at the top front (fig. 2).



3 Install hinges into front tube of sub frame. Measure from the mounting surface of one hinge to the other, it should be 1/8" less than the width of the bed as measured in step 1. If the mounting surfaces of the hinges are too wide you will have to remove the appropriate amount of material from the ends of the front tube of the sub frame. This will allow the hinges to move inward. Be sure to remove equal amounts from each side of the front tube so that the unit remains centered in the opening.

4 Included in the instructions are two template pages that locate the hinge mounting holes. The templates are marked passenger side and driver's side. Using scissors cut out the indicated portion of the templates. Fold along dotted line, folding away from you. Using masking tape, tape the template to the bedside with the folded portion on the bend at the top of the bedside (the top of the bedside for 1954-87) and the indicated side against the front panel (fig. 3). Center punch hinge mounting holes and drill 25/64" holes to accept nutserts. Install four of the nutserts provided.

5 Install hinges using four of the 1/4" x 3/4" button head bolts provided. Install drip tray using four Torx screws provided (fig. 4).

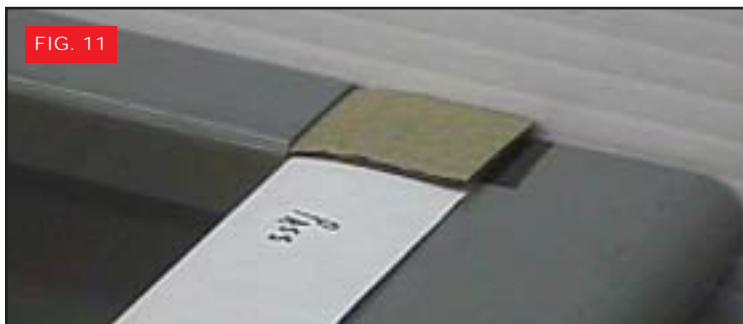


6 The side rain gutters will now need to be fitted. The capped end goes to the rear (fig. 5), keep the rain gutter as close to the tailgate as is practical. Measure from where the rear of the rain gutter will go to the hinge pin and deduct 3/4". Cut the gutter to length. Using the sample skin piece as a guide determine the mounting height of the gutter on the bedside (fig. 6). You want the weatherstrip to seal against the bottom of the skin when the cover is closed. Set the height of the gutters so that the weatherstrip is about half crushed by the lid when closed. The bottom of the rain gutter may need to be notched to clear the front drip tray as it passes over (fig. 7). Make sure that the drip tray may be removed without interfering with the rain gutters. Having satisfied yourself that the gutter height is correct, that the gutter is notched so that it rests on the drip tray, drill a 1/8" hole at the rear of the gutter for the mounting bolt. Be sure that this bolt will be hidden by the stake pocket on the outside of the bed. Remove gutter, enlarge hole in gutter to 1/4", enlarge hole in bedside to 25/64" to accept nutsert, install nutsert. Duplicate the process on the other side.



7 Temporarily install the gutters using the 1/4" x 3/4" button head bolts provided. Mark the bedside for the rear drain holes as shown (fig. 8). Remove gutters and drill 1/2" drain holes (fig. 9). Remove front drip tray, determine the lowest point of the drip tray and drill 1/2" drain holes through each hinge into the stake pocket (fig. 10). Any water flowing forward will now drain into the drip pan and out through the bedside and any water flowing rearward will drain out through the stake pockets at the rear.

8 You may want to remove the hinges, reinstall them into the cover and bolt the cover into place. Satisfy yourself that you are happy with the finished height of the cover at the hinge area, enlarging the hinge mounting holes if necessary for fine adjustment. Reinstall the drip tray, the rain gutters and the weatherstripping. Check finished height of the cover at the rear, enlarging the mounting holes for the rain gutters if necessary for fine adjustment. **This is your last opportunity to make corrections.**



9 Place the U-shaped steel cover over the front bed panel (fig. 11). Notice that we are using a thin piece of shim stock to keep the trim piece level during mock-up. This panel is designed to smooth off the look of the front panel where it will meet the tonneau cover. There is enough two-sided tape supplied to fasten it in place for the final installation (**that means don't tape it in place NOW**). This trim piece should be painted or upholstered to match whatever finish you put on the cover.

10 The rear of the cover should be even with the rear of the bedside and you now should have a 1/4" gap between the bed sides and the cover and a 1/4" gap between the front of the cover and the trim piece at the front.

11 Remove all pieces to prepare for paint. To ensure good adhesion all aluminum parts must be cleaned with Metal Prep, coated with a self etching primer such as Vinyl Wash, then primed with an epoxy primer. Tape off hinge pins as the increased thickness of paint will make them too tight.

12 Everything painted and or upholstered? OK, let's put it together for the last time. Remove any masking tape that may still be on the bed. Install the hinges into the cover. Using a clear sealer such as body seam sealer or clear tub & tile caulk, apply a light coat of sealer to the mounting surfaces of the hinges (fig. 12), carefully lower the cover straight



down to the hinge mounting bolts. Mount the hinges, wipe off any excess sealer immediately, secure the cover in the open position to allow yourself room to work. Apply sealer to the drip tray mounting flanges of the hinges and to the drip tray flange that butts the front bed panel (fig. 13), install the drip tray. Apply two-sided tape supplied to the mounting surfaces of the rain gutters, cut out the hole for the rear mounting bolts. Carefully, so as not to let the tape touch the bedside, start the mounting bolt into the nutsert. Rest the front of the gutter on the front drip tray and slowly attach the



gutter to the bedside starting with each end and finishing with the middle, tighten mounting bolt. Repeat for opposite gutter. There are certain areas on the rain gutters that may require small amounts of seam sealer to make them water tight. The tape takes 72 hours to cure. Leave the unit sitting with the cover in the open position during the cure cycle so as not to create stress on the gutters during the cure.

13 The U-shaped front trim piece may now be installed. If the bed is off of the truck, I prefer to rivet it onto the front panel, however, we have provided you with enough two-sided tape to apply one strip on the front of the front panel and another to the top of the roll of the front panel (fig. 14). This also requires a 72 hour cure.



14 In your hardware bag you will find 8 stainless steel brackets, by putting two dissimilar pieces together you will see that they form a two-legged bracket with which to attach the actuators (fig. 15). The piece with the square mounting holes is designed to sit on top of the piece with slotted holes. If you look on the sub frame you will find two pre-drilled 3/16" holes on each side. Use the supplied rivets to attach the two shorter actuator brackets to the sub frame. Using the supplied clevis pin attach the actuators to the upper mounts with the wiring facing the cab. Attach the bottom (1954 and up are longer) actuator brackets to the actuators with the clevis pins supplied. Close the



instructions continued →

cover. You will have to crawl into the bed, take a trouble light and the magic marker. The actuators should be vertically in line with the upper brackets so as not to cause binding. Move the bottom of the actuator towards the rear of the vehicle (fig. 16) until the bottom mounting bracket is just touching the floor (fig. 17). Mark the two square holes onto the floor on each side. Lift the cover, drill the marked holes with a 1/4" drill. Attach the lower mounting brackets to the floor with the 1/4" x 1 1/2" carriage bolts supplied. Also drill a 1/4" hole to allow the actuator wires to go through the bed floor.



15 When installing the weatherstrips to the rain gutters measure the length required and cut the weatherstrip to length. Be careful not to pull on them as you install them as they will stretch. We do not normally glue these pieces in place. The tailgate weatherstrip is primarily designed to keep the paint from being damaged. You will have to decide if it is possible to adjust your tailgate position down a bit to allow for the thickness of the weatherstrip (**best choice**) or whether to position the weatherstrip slightly forward of the top of the tailgate roll in order to leave a 3/16" gap between the gate and the cover. Cut the weatherstrip to length and attach.

16 Mount the power window switch in a suitable position in the cab. The switch has five wires. The red is power (batt +), the two whites are ground, the other two wires go to the actuator wires. **IF YOU INTEND TO USE A REMOTE CONTROL WITH THIS UNIT CALL US AT 519-843-9906 FOR PROPER INSTRUCTION.**

THERE IT IS, YOU'RE FINISHED!
We sincerely hope that your "HARD TOP" will make you smile every time you look at it.

We hope that this has been a pleasurable experience for you. If you have any problems or questions, please don't hesitate to contact us. Also, if you have any comments or suggestions for other products you would like, or ways we can improve our existing products, please call us at (519) 843-9906 or contact our web-site at www.pros-pick.com.



Pick-up Beds	Custom Tailgates
Custom Latch Kits & Hardware	Custom Pick-up Bed Tonneaus
Fiberglass Reproduction Fenders & Body Panels	
Custom Pick-up Bed Floors and Trim Components	
Utility Trailers	



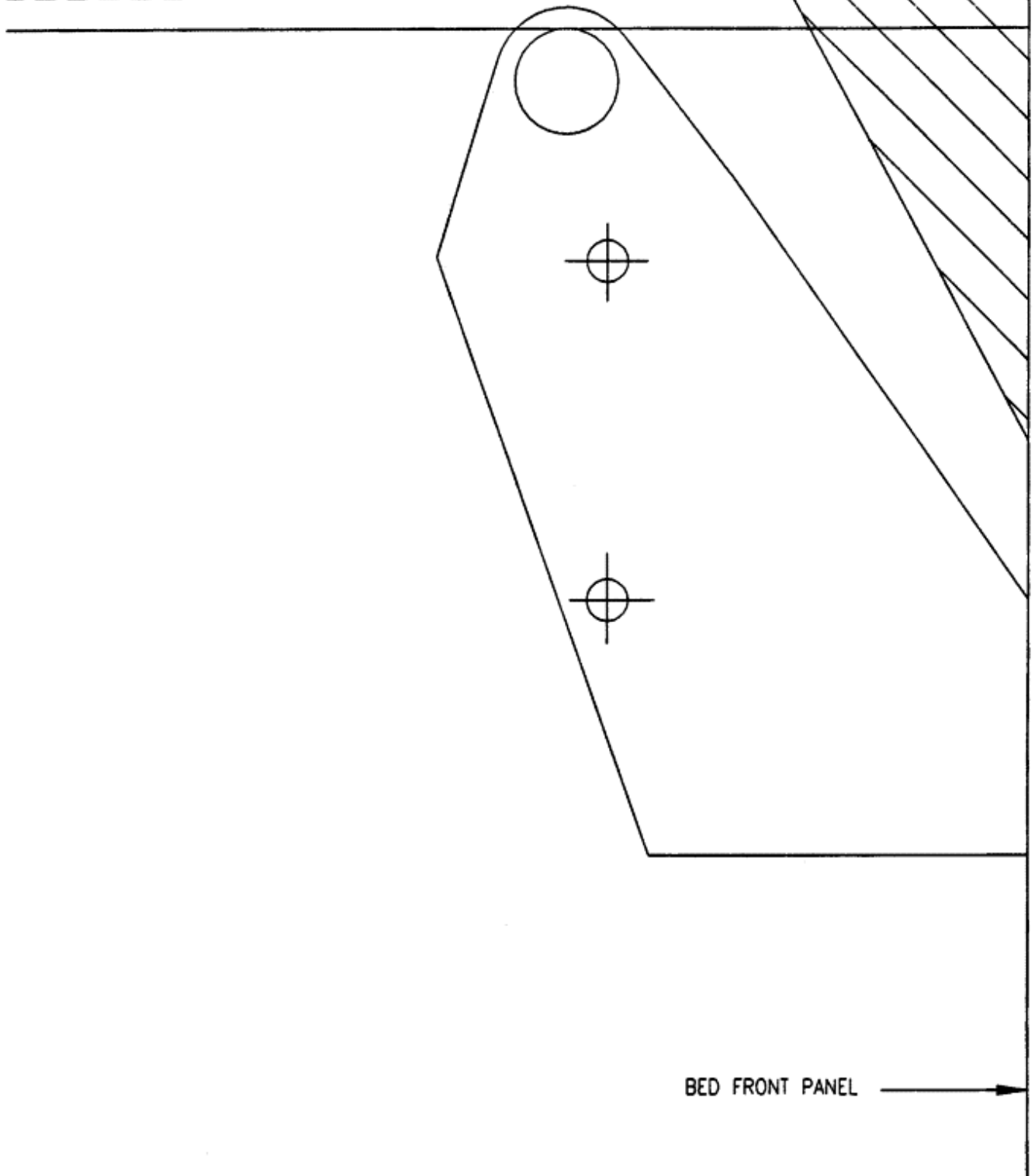
Wiring Systems	Fuse panel Kits
Switches & Relays	Complete Relay Kits
Billet Aluminum Knobs	Lite'n Boltz™
A/C Cooling System Components	Remote Entry Kits
Power Window Kits	Solenoids, Actuators & Latch Kits

PROUDLY MADE IN NORTH AMERICA!

1930-53 CHEV.
DRIVER SIDE

CUT-OUT

FOLD LINE REPRESENTS TOP OF TONNEAU SKIN

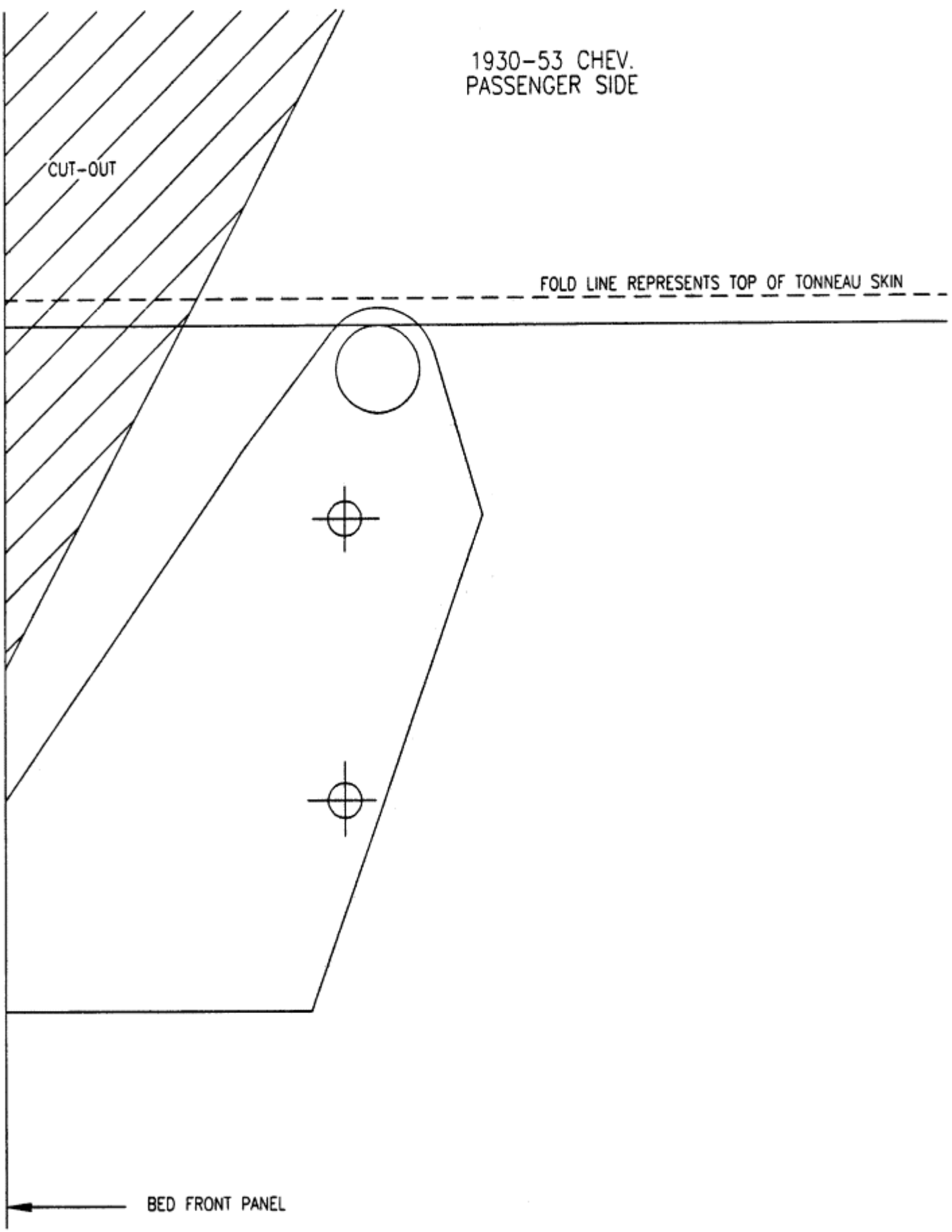


BED FRONT PANEL

1930-53 CHEV.
PASSENGER SIDE

CUT-OUT

FOLD LINE REPRESENTS TOP OF TONNEAU SKIN

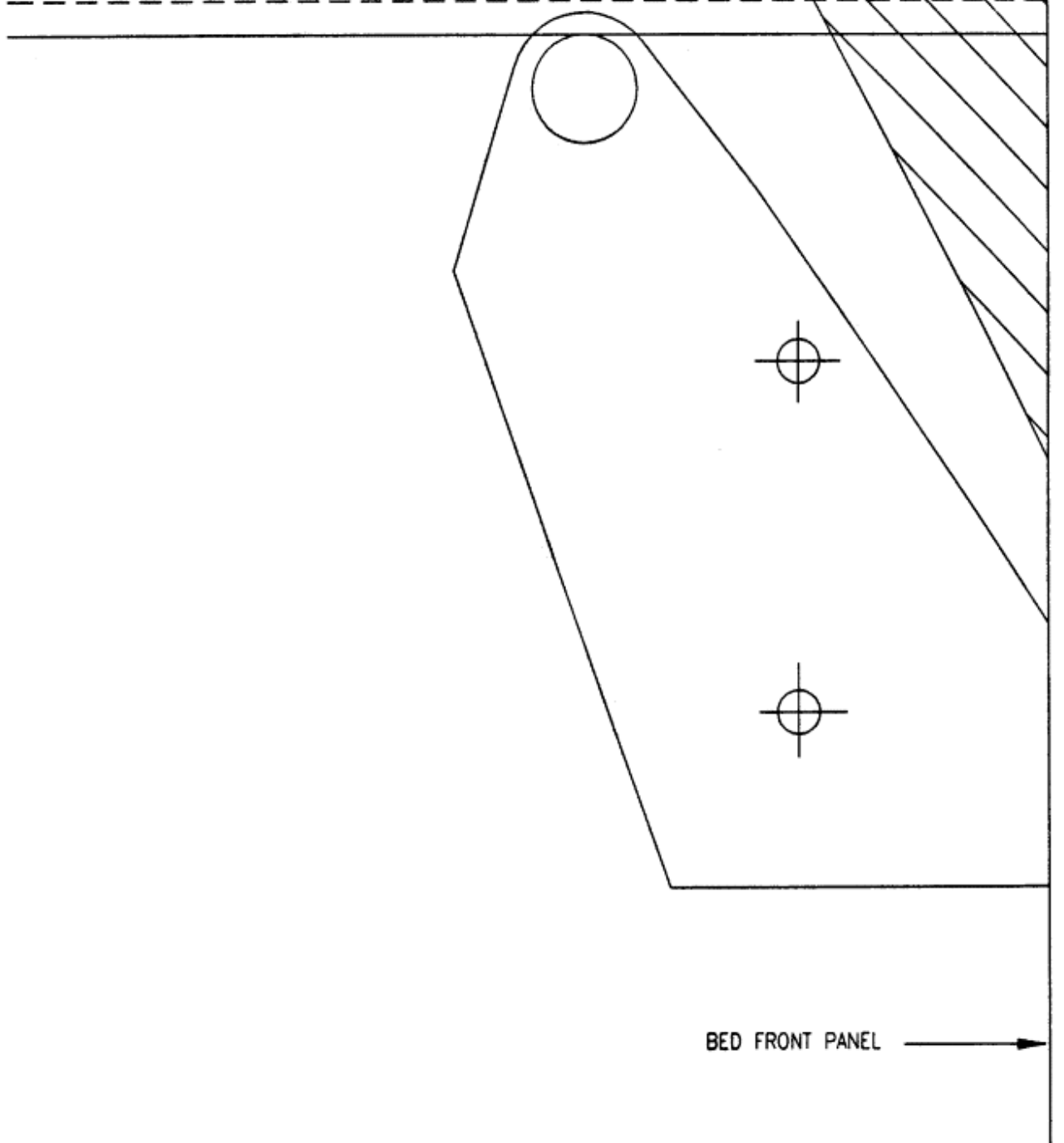


BED FRONT PANEL

1954-87 CHEV.
DRIVER SIDE

CUT-OUT

FOLD LINE REPRESENTS TOP OF TONNEAU SKIN



BED FRONT PANEL

1954-87 CHEV.
PASSENGER SIDE

